

DID YOU KNOW...

SERVICE GROUPS

Service Groups



The various service groups in the Village of Acme give back to the community through volunteerism and donations to various groups and events.

The service groups are always looking for more members. If you are looking to join a group that benefits the community, consider joining one of the service groups!

TRANSFER SITE

HOURS OF OPERATION

Tuesday, Thursday, & Saturday

9:00 am - 5:00 pm

*Closed Statutory Holidays

Transfer Site will be closed on the following days for the Statutory holidays:

- Saturday, November 11 - Remembrance Day
- Saturday, December 26 - Boxing Day

SAFETY

- No one under the age of 16 is allowed to exit the vehicle at the Transfer Site.
- Please inform the attendant what you are dropping off to ensure it is disposed of in the correct areas.



OIL RECYCLING

ONLY empty motor oil containers can be recycled. Please note, the Transfer Station DOES NOT accept any other plastic container recycling

Unacceptable containers include: antifreeze / coolant, brake fluid, laundry detergent, windshield fluid, etc.



WINTER PREPARATION

MOBILE HOMES: GET WINTER READY



If you are in a mobile home, ensure your heat tape is secure and working under your trailers.

Ensure your home has proper skirting around your trailer to prevent freezing of pipes.

EMERGENCY PREPAREDNESS

Be prepared for winter emergencies.

- Ensure your vehicle has a full tank of gas.
- Have an Emergency Plan in place.
- Have an Emergency Kit for your household and check it annually to ensure any used or expired items are replaced.

Information about emergency kits and what should be in them can be found on the Red Cross Website at www.redcross.ca

EMERGENCY KIT CHECKLIST

- Water Medications
- Non-perishable Food
- Important Documents
(Copies of Licenses / Passports / Birth Certificates / Insurance Policies)
- First Aid Kit Flashlights and Batteries
- Cash Extra House / Car Keys
- Personal Hygiene Items Hand Sanitizer



EMERGENCY PLAN CHECKLIST

- Plan / Practice a Home Evacuation Route
- Know the Location of Fire Extinguishers
- Know the Location of Utility Shut-offs
- Know the Location of Emergency Kit
- Know the Muster Point Outside of Home
- Have a Plan for Evacuating Pets
- Prepare to be self-sufficient for minimum of three (3) days if evacuation is not possible / safe
- Know the Community's Emergency Plan / Evacuation Routes
- Know where to get updates on an emergency

Newsletter from the Village Office



Address: 615A Pacific Avenue, Box 299
Acme, AB T0M 0A0

Office Hours: Monday to Friday
8:00 am - 4:30 pm
* Closed 12:00 - 1:00 for lunch
* Closed all statutory holidays

Phone: 403-546-3783 Fax: 403-546-3014

Email: clerk@acme.ca Website: www.acme.ca

DATES TO NOTE

- November 5: Time Change: Fall Back - 2:00 am
- November 11: Remembrance Day
- November 11: Remembrance Day Service
- November 14: Council Meeting - 6:00 pm
- November 27: Council Meeting - 6:00 pm
- December 3: Angels' Annual Christmas Party
- December 4: Candy Cane Run Bag Drop Off
- December 11: Candy Cane Run Donation Pick-up
- December 11: Council Meeting - 6:00 pm
- December 25: Christmas Day
- December 26: Boxing Day
- December 31: New Years Eve

For a list of upcoming community events, please visit the Village of Acme website at www.acme.ca/community-events or contact the Village Office for a physical copy of the events listing.

FROM THE VILLAGE OFFICE

WATER UTILITY BILLS / PAYMENTS

- Water Utility Bills for the months of September & October are due by November 30, 2023.
- Payments can be made via:
 - ◇ E-transfer to accounting@acme.ca
 - ◇ Online Banking using your 5 digit Utility Account Number
 - ◇ At the Bank Teller
 - ◇ Cash or Debit at the Village Office
- Village of Acme Utility Bills are only sent out every second month. However, residents can make monthly payments. Any additional payments made towards your utility bill will show as a credit on your next bill.



COUNCIL MEETINGS

- ◆ Council meets the second and fourth Monday of every month.
- ◆ Council meetings are open to the public and everyone is welcome to attend.

SPEAKING AT COUNCIL MEETINGS

- ◆ Residents can only speak at the council meetings if they are a delegate.
- ◆ You must register to become a delegate for the meeting. This will provide you a time slot near the beginning of the meeting to present your concerns to Council.
- ◆ To become a delegate, you must contact the CAO, Gary Sawatzky, at the Village Office to inform him of your concern(s) and ask for your name to be added to the Agenda as a delegate. Please call 403-546-3783 or email cao@acme.ca.

FROM PUBLIC WORKS

GARBAGE PICK UP REMINDERS

- Please ensure all bags are tied
- Only 4 bags will be picked up
- Bags cannot be more than 40 pounds each
- Ripped bags will not be picked up
- Garbage must be out on Wednesday by 8:00am
- Residents can take garbage to the Transfer Site at no charge should they have more than the 4 allowed bags or if the bags weigh more than 40 pounds.



GARBAGE BINS

- To prevent your garbage bags from being broken or ripped open by birds and squirrels, please have a bin to put your garbage in.
- Garbage bins can be made of wood, plastic, composite, or steel.
- Please ensure the garbage bin you build or purchase has a lid that can be secured and not blow off.



HOLIDAY GARBAGE PICKUP

During the week of Christmas, both Residential and Commercial garbage will be picked up on Wednesday, December 27.

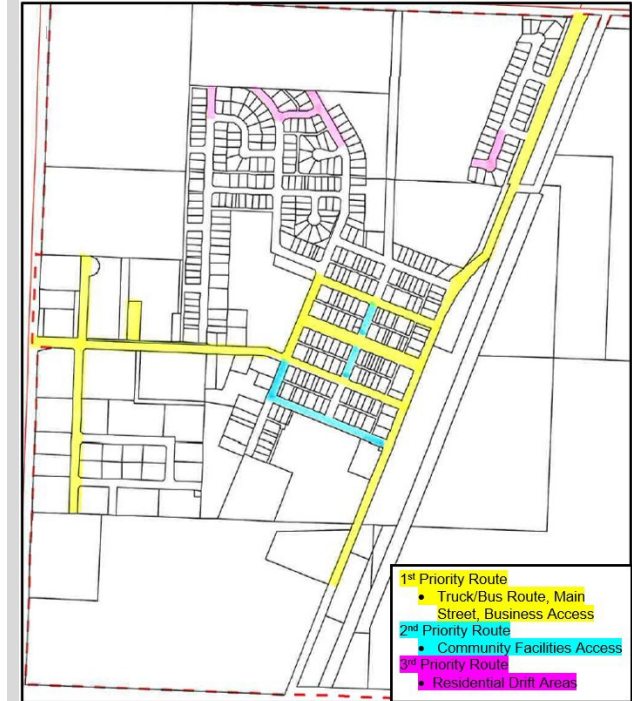
There will be no commercial garbage pick up on Friday, December 29.

The regular schedule will resume in January.



SNOW REMOVAL

PRIORITY SNOW REMOVAL ROUTE



CLEARING SIDEWALKS



Please ensure your sidewalks remain cleared of snow and ice throughout the winter. Please shovel snow onto your grass.

SAND / ICE MELT

To help ensure your sidewalks are clear of ice, please use sidewalk safe ice melt or sand.



If you need sand to put on your sidewalk, there is a yellow bin full of sand at the firehall for residents. Please only take what you need.

FRIENDLY REMINDER

With the cold weather coming, please remember to keep all extension cords off the sidewalk. If you need to plug in your vehicles on the street, please ensure the cord is raised at least 8 feet (2.5 m) above the sidewalk.

