

TRANSFER SITE

HOURS OF OPERATION

Tuesday, Thursday, & Saturday
9:00 am - 5:00 pm
*Closed Statutory Holidays

CHRISTMAS GARBAGE

- Burn pit is for trees and branches only — this includes real Christmas Trees. **NO FURNITURE!**
- Cardboard must be flattened — this means all edges down flat.
- All styrofoam must be bagged and put in the transfer bins. Please remove it from the cardboard being recycled.
- Christmas wrapping paper cannot be recycled. Please bag it and put in the transfer bins.



SAFETY

- No one under the age of 16 is allowed to exit the vehicle at the Transfer Site.
- Please inform the attendant what you are dropping off to ensure it is disposed of in the correct areas.



MOBILE HOMES:

GET WINTER READY

If you are in a mobile home, ensure your heat tape is secure and working under your trailers. Ensure your home has proper skirting around your trailer to prevent freezing of pipes.



EMERGENCY PLANNING CHECKLIST

EMERGENCY KIT CHECKLIST

- Water
- Medications
- Non-perishable Food
- Important Documents (*Copies of Licenses / Passports / Birth Certificates / Insurance Policies*)
- First Aid Kit
- Flashlights and Batteries
- Cash
- Extra House / Car Keys
- Personal Hygiene Items
- Hand Sanitizer

EMERGENCY PLAN CHECKLIST

- Plan / Practice a Home Evacuation Route
- Know the Location of Fire Extinguishers
- Know the Location of Utility Shut-offs
- Know the Location of Emergency Kit
- Know the Muster Point Outside of Home
- Have a Plan for Evacuating Pets
- Prepare to be self-sufficient for minimum of three (3) days if evacuation is not possible / safe
- Know the Community's Emergency Plan / Evacuation Routes
- Know where to get updates on an emergency

EMERGENCY PREPAREDNESS

Be prepared for winter emergencies.

- Ensure your vehicle has a full tank of gas.
- Have an Emergency Plan in place.
- Have an Emergency Kit for your household and check it annually to ensure any used or expired items are replaced.

Information about emergency kits and what should be in them can be found on the Red Cross Website at www.redcross.ca

Newsletter from the Village Office



Address: 615A Pacific Avenue, Box 299
Acme, AB T0M 0A0

Office Hours: Monday to Friday
8:00 am - 4:30 pm
* Closed 12:00 - 1:00 for lunch
* Closed all statutory holidays

Phone: 403-546-3783 Fax: 403-546-3014

Email: clerk@acme.ca Website: www.acme.ca

DATES TO NOTE

- January 1: New Years Day!
- January 8: Kids back to school
- January 8: Council Meeting - 6:00 pm
- January 22: Council Meeting - 6:00 pm
- January 31: Utility Bills Due
- January 31: Animal License Due
- February 12: Council Meeting - 6:00 pm
- February 14: Valentine's Day!
- February 19: Family Day!
- February 26: Council Meeting - 6:00 pm

For details on upcoming community events, please visit the Village of Acme website at www.acme.ca/community-events or contact the Village Office for a physical copy of the events.

Please email any events you wish to have added to this webpage to clerk@acme.ca.

FROM THE VILLAGE OFFICE

WATER UTILITY BILLS / PAYMENTS

- Water Utility Bills for the months of November & December are due by January 31, 2023.
- Payments can be made via:
 - ◇ E-transfer to accounting@acme.ca
 - ◇ Online Banking using your 5 digit Utility Account Number
 - ◇ At the Bank Teller
 - ◇ Cash or Debit at the Village Office

ANIMAL LICENCES

- Animal License Renewals are due by January 31, 2023.
- Please notify the Village Office if you have lost a previously registered pet or if you have adopted a new dog or cat.
- Payments can be made via:
 - ◇ E-transfer to accounting@acme.ca
Please include animal type and name in the memo. (I.e: Dog Lucky, Cat Whiskers)
 - ◇ Online Banking. Use account #11111 for Dogs and account #22222 for Cats.
 - ◇ Cash or Debit at the Village Office

COUNCIL MEETINGS

- ◆ Council meets the second and fourth Monday of every month.
- ◆ Council meetings are open to the public and everyone is welcome to attend.

SPEAKING AT COUNCIL MEETINGS

- ◆ Residents can only speak at the council meetings if they are a delegate.
- ◆ To become a delegate, you must contact the Village Office to ask for your name to be added to the Agenda as a delegate. Please call 403-546-3783.

FROM PUBLIC WORKS

GARBAGE PICK UP REMINDERS

- Please ensure all bags are tied
- Only 4 bags will be picked up
- Bags cannot be more than 40 pounds each
- Ripped bags will not be picked up
- Garbage must be out on Wednesday by 8 am
- Residents can take garbage to the Transfer Site at no charge should they have more than the 4 allowed bags or if the bags weigh more than 40 pounds.



8:00 A.M.



GARBAGE BINS

- To prevent your garbage bags from being broken or ripped open by birds and squirrels or from freezing to the ground, please have a bin to put your garbage in.
- Garbage bins can be made of wood, plastic, composite, or steel.
- Please ensure the garbage bin you choose has a lid that can be secured and not blow off.



THANK YOU

Thank you to all those who generously donated to the Acme Food Bank through the Annual Candy Cane Run!

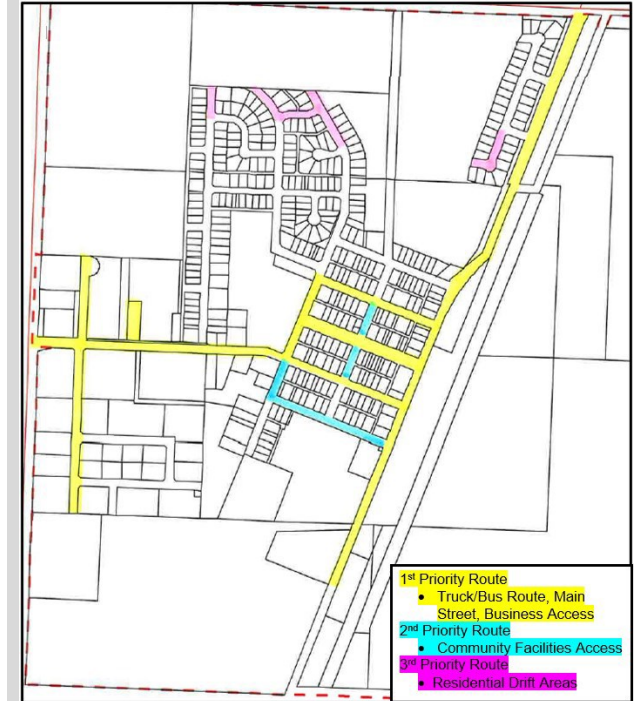


Thank you also to the Acme Volunteer Fire Department for going door to door to drop off the donation bags and then collecting the donated items the following week and delivering them to the Food Bank!

What a wonderful community we live in!

SNOW REMOVAL

PRIORITY SNOW REMOVAL ROUTE



CLEARING SIDEWALKS



Please ensure your sidewalks remain cleared of snow and ice throughout the winter. Please shovel snow onto your grass.

SAND / ICE MELT

To help ensure your sidewalks are clear of ice, please use sidewalk safe ice melt or sand.



If you need sand to put on your sidewalk, there is a yellow bin full of sand at the firehall for residents. Please only take what you need.

FRIENDLY REMINDER

With the cold weather coming, please remember to keep all extension cords off the sidewalk. If you need to plug in your vehicles on the street, please ensure the cord is raised at least 8 feet (2.5 m) above the sidewalk.

